

Limerston Street, SW10

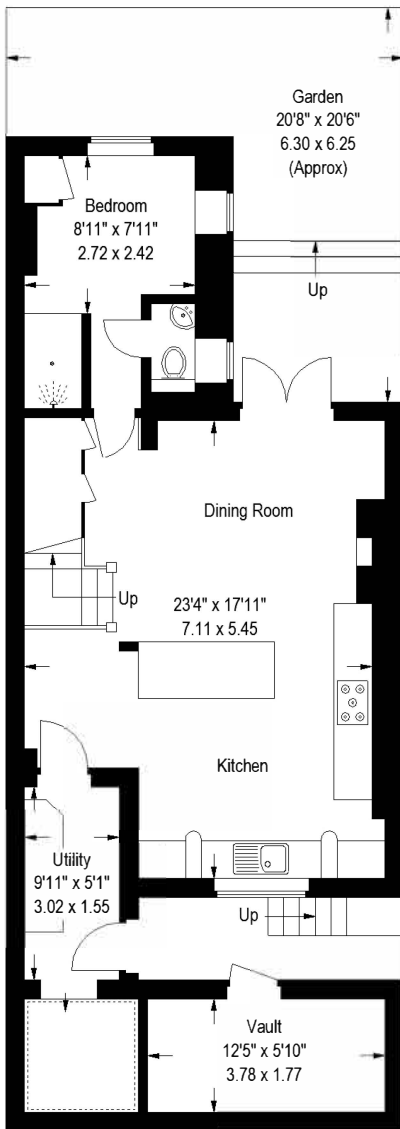
Approximate Gross Internal Area (Excluding Reduced Headroom)

1716 sq ft / 159.4 sq m

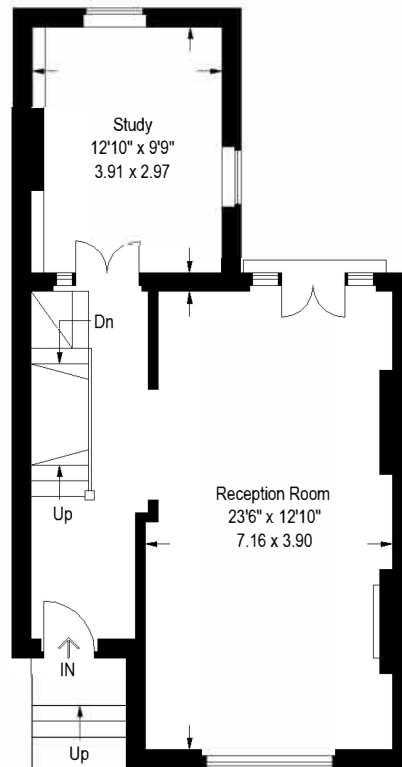
Reduced Headroom = 31 sq ft / 2.9 sq m

Vault = 74 sq ft / 6.9 sq m

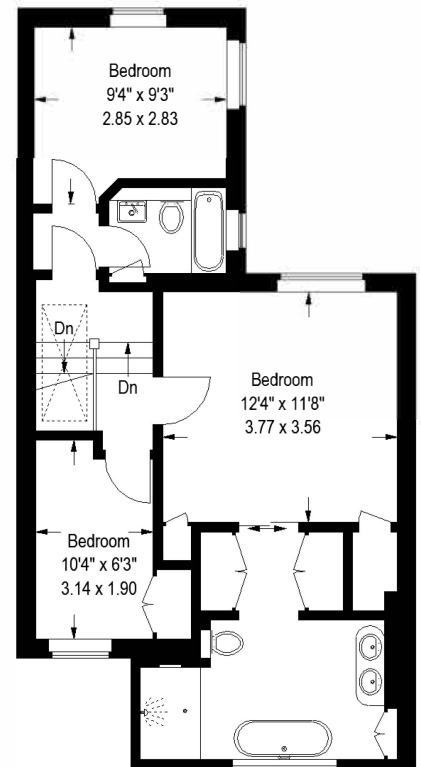
Total = 1821 sq ft / 169.2 sq m



Lower Ground Floor



Raised Ground Floor



First Floor


 = Reduced headroom below 1.5 m / 5'0"

Illustration for identification purposes only, measurements are approximate, not to scale.